



Customer information packet

EM3212T

5HP, 3465RPM, 3PH, 60HZ, 182T, 3622M, OPSB, F1

Class - None

Division - Not Applicable

Specifications

Enclosure	OPSB
Frame	182T
Frame Material	Steel
Frequency	60.00 Hz
Motor Letter Type	Three Phase
Output @ Frequency	5.000 HP @ 60 HZ
Phase	3
Synchronous Speed @ Frequency	3600 RPM @ 60 HZ
Voltage @ Frequency	230.0 V @ 60 HZ
	460.0 V @ 60 HZ
XP Class and Group	None
XP Division	Not Applicable
Agency Approvals	CSA EEV
	NEMA PREMIUM
	NEMA_PREMIUM
	UR
Ambient Temperature	40 °C
Auxillary Box	No Auxillary Box
Auxillary Box Lead Termination	None
Base Indicator	Rigid
Bearing Grease Type	Polyrex EM (-20F +300F)
Blower	None
Current @ Voltage	5.900 A @ 460.0 V
	12.400 A @ 208.0 V
	11.800 A @ 230.0 V
Design Code	A
Drip Cover	No Drip Cover
Duty Rating	CONT
Efficiency @ 100% Load	86.5 %
Electrically Isolated Bearing	Not Electrically Isolated
Feedback Device	NO FEEDBACK
Front Shaft Indicator	None

Part detail

Revision	A
Type	AC
Mech. spec.	36G548
Base	
Status	PRD/A
Elec. spec.	36WGQ033
Layout	36LYG548
Eff. date	05-01-2024
CD Diagram	CD0005
Poles	02
Leads	9#16
Proprietary	False
Created date	12-09-2020

Heater Indicator	No Heater
High Voltage Full Load Amps	5.9 a
Insulation Class	F
Inverter Code	Inverter Ready
KVA Code	J
Lifting Lugs	No Lifting Lugs
Locked Bearing Indicator	No Locked Bearing
Motor Lead Quantity/Wire Size	9 @ 16 AWG
Motor Lead Termination	Flying Leads
Motor Standards	NEMA
Motor Type	3622M
Mounting Arrangement	F1
Number of Poles	2
Overall Length	13.62 IN
Power Factor	91
Product Family	General Purpose
Pulley End Bearing Type	Ball
Pulley Face Code	Standard
Pulley Shaft Indicator	Standard
Rodent Screen	None
RoHS Status	ROHS COMPLIANT
Service Factor	1.15
Shaft Diameter	1.125 IN
Shaft Ground Indicator	No Shaft Grounding
Shaft Rotation	Reversible
Shaft Slinger Indicator	No Slinger
Speed	3465 rpm
Speed Code	Single Speed
Starting Method	Direct on line
Thermal Device - Bearing	None
Thermal Device - Winding	None
Vibration Sensor Indicator	No Vibration Sensor
Winding Thermal 1	None
Winding Thermal 2	None

Nameplate

NP3553LUA

CAT.NO.	EM3212T						
SPEC.	36G548Q033G2						
HP	5						
VOLTS	230/460						
AMPS	11.8/5.9						
RPM	3465						
FRAME	182T	HZ	60	PH	3		
SF	1.15	CODE	J	DES	A	CLASS	F
NEMA NOM. EFF	86.5	PF	91				
RATING	40C AMB-CONT						
CC	010A	USABLE AT 208V			N/A		
DE	6206	ODE	6205				
ENCL	OPSB	SN					
VPWM INVERTER READY							
CT30-60(2:1) VT3-60(20:1)							
USABLE AT	50HZ 5HP 190/380V 15.2/7.6A					SF1.0	

Accessories

Part number	Description	Multiplier
36-3403	C FACE KIT	A8
36EP1405A09SP	D-FLANGE KIT	

AC Induction Motor Performance Data

Record # 85737

Preliminary Data Sheet

Winding: 36WGQ033-RXXX		Type: 3622M		Enclosure: OPSB	
Nameplate Data			460 V, 60 Hz: High Voltage Connection		
Rated Output (HP)	5		Full Load Torque	7.57 LB-FT	
Volts	230/460		Start Configuration	direct on line	
Full Load Amps	11.8/5.9		Breakdown Torque	28.9 LB-FT	
R.P.M.	3465		Pull-up Torque	20.2 LB-FT	
Hz	60 Phase	3	Locked-rotor Torque	22.2 LB-FT	
NEMA Design Code	A KVA Code	J	Starting Current	46.1 A	
Service Factor (S.F.)	1.15		No-load Current	2 A	
NEMA Nom. Eff.	86.5 Power Factor	91	Line-line Res. @ 25°C	3.44 Ω	
Rating - Duty	40C AMB-CONT		Temp. Rise @ Rated Load	36°C	
S.F. Amps	13.4/6.7		Temp. Rise @ S.F. Load	49°C	
			Locked-rotor Power Factor	65.2	
			Rotor inertia	0.0988 lb-ft ²	

Load Characteristics 460 V, 60 Hz, 5 HP

% of Rated Load	25	50	75	100	125	150	S.F.
Power Factor	57	78	87	90	92	93	92
Efficiency	85.7	89.5	89.4	88.1	86.3	83.9	87
Speed	3568	3538	3504	3467	3425	3379	3435
Line amperes	2.44	3.38	4.56	5.89	7.38	9.02	6.76

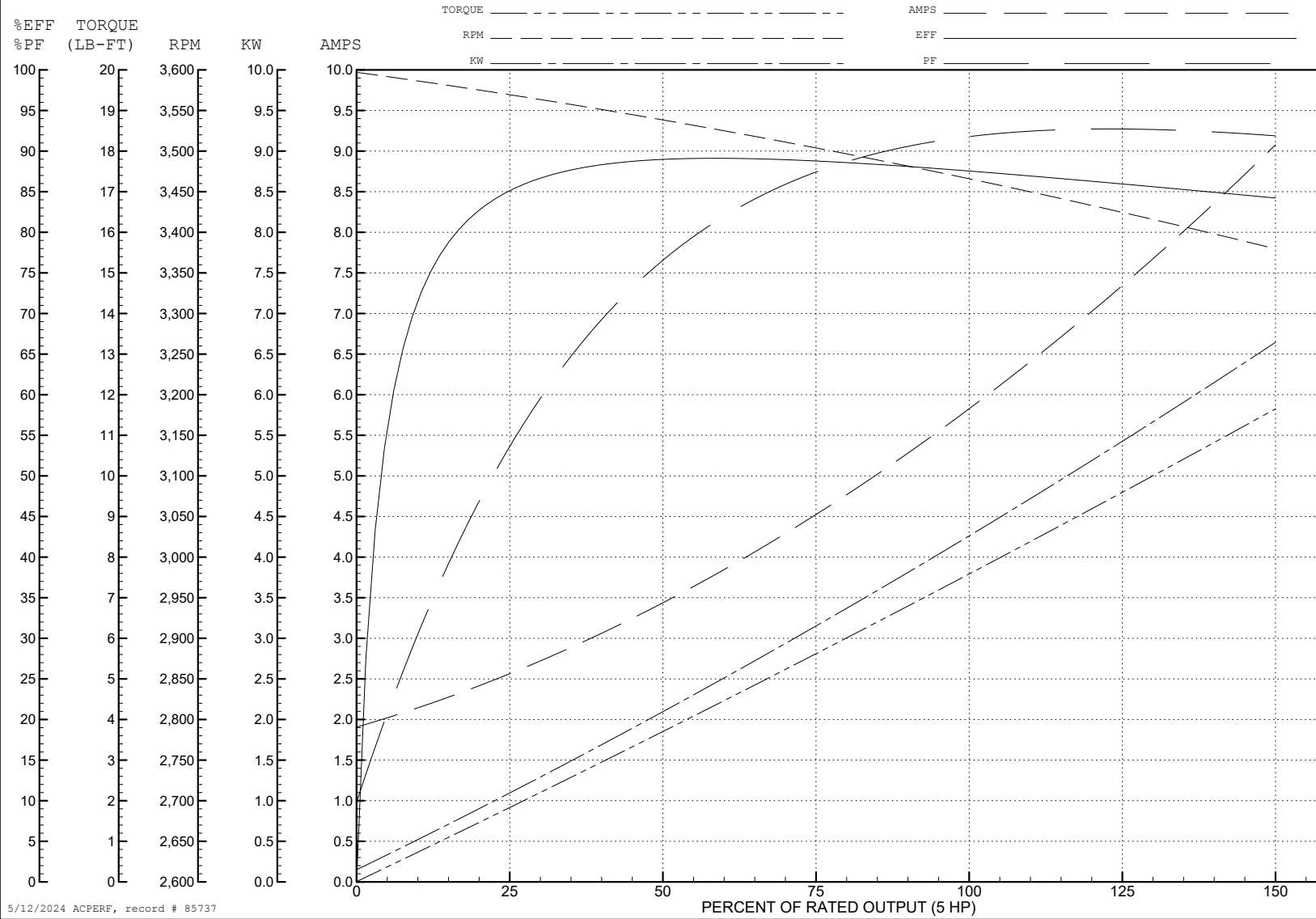
ABB Motors and Mechanical Inc.

WINDING # 36WGQ033

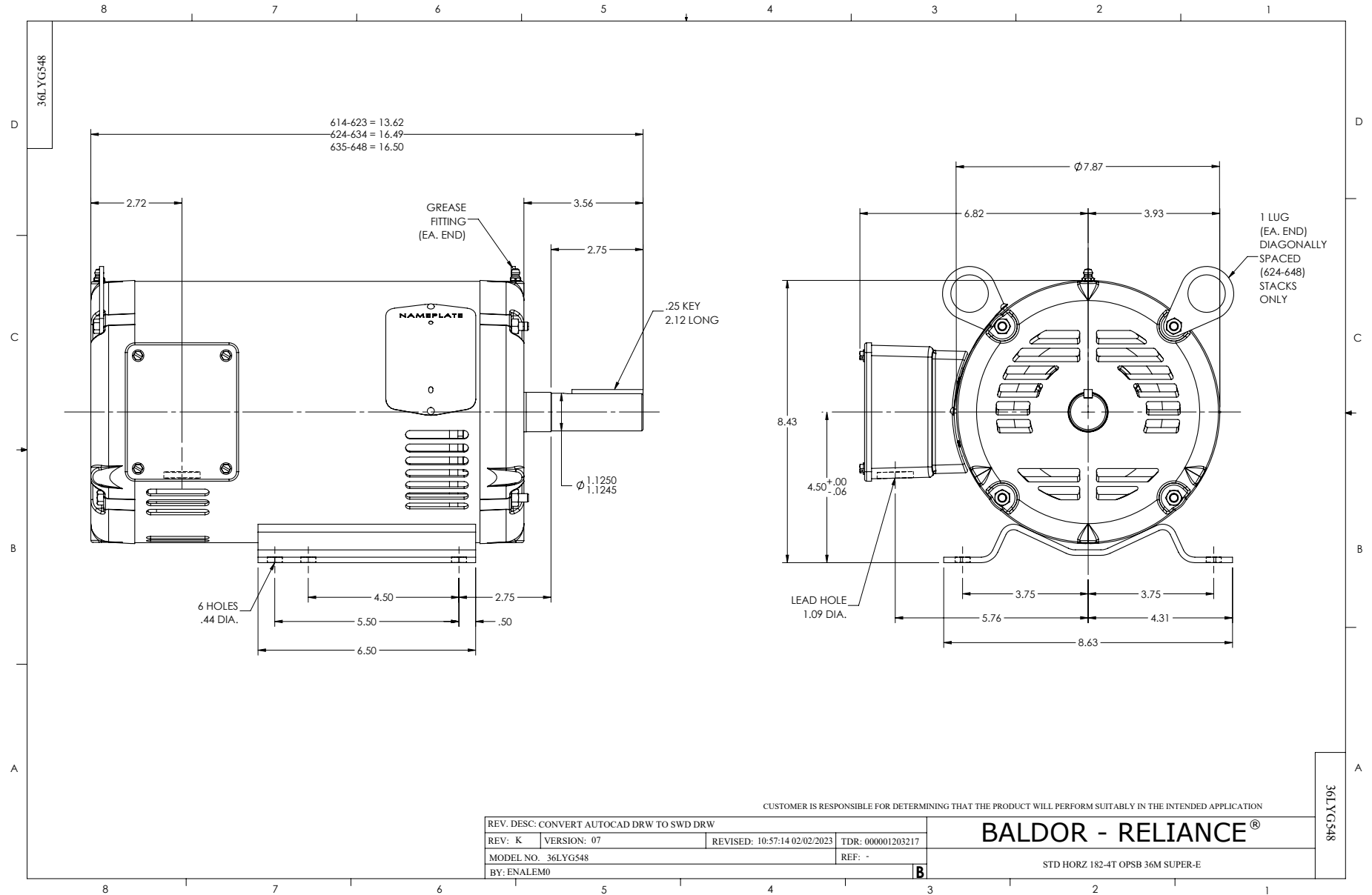
Typical performance - not guaranteed values.

5 HP 3 PH 60 HZ 3465 RPM 460 V 3622M

TORQUES (LB-FT): PO=28.9 PU=20.2 LR=22.2 LRA=46.1



5/12/2024 ACPERF, record # 85737



CD0005



LOW VOLTAGE
(2Y)



LINE

HIGH VOLTAGE
(1Y)



LINE

NOTES:

1. INTERCHANGE ANY TWO LINE LEADS TO REVERSE ROTATION.
2. OPTIONAL THERMOSTATS ARE PROVIDED WHEN SPECIFIED.
3. ACTUAL NUMBER OF INTERNAL PARALLEL CIRCUITS MAY BE A MULTIPLE OF THOSE SHOWN ABOVE.
4. LEAD COLORS ARE OPTIONAL. LEADS MUST ALWAYS BE NUMBERED AS SHOWN.

CD0005

REV. DESC: REVISE TO SHOW OPTIONAL COLORS			
REV. LTR: E	BY: JLP	REVISED: 01/19/99 10:15	TDR: 0171435
S00000		FILE: AAA00005140	MDL: -
		MTL: -	

BALDOR ELECTRIC Co.

3PH, DV, 9 LEADS